

ND Option 2

Utilizing GED assessments in a different manner.

Stanley Schauer, NDDPI Assessment Director

What is Option 2

- Option 2 was created by SB 2147 during the 67th Legislative Session.
- The name Option 2 comes from SB 2147 creating a new subsection 2 in 15.1-21-02.2 and 15.1-21-02.3 (HS grad min requirements and optional HS curriculum requirements).
 - GED Testing Service has a program called GED Option 2, our version, ND Option 2, is similar but has some distinct differences.
 - One distinct difference being the student doesn't earn a GED, the student is working towards earning a high school diploma.

What is Option 2-continued

- **Verbatim (same in both sections of law):**
 - If approved by the board of a school district or nonpublic school, a school district or nonpublic school may develop eligibility criteria or programmatic requirements to allow a passing score on the relevant portions of the GED assessment to receive credit for the corresponding requirements of subdivisions a through d of subsection 1.
 - Subdivisions a-d subjects: ELA, Math, Science, and Social Studies
 - Subjects line up with the four separate GED tests.
- **Legislative Intent:**
 - Provide students who are at-risk or on track to be at-risk, in terms of credit deficiency, another option or pathway to recover credits, catch up to peers, show competency in core subject areas. It is not designed to fast track through the core credits. It is designed to keep credit deficient students in school.
- **Course codes exist for each subject area**

What this means

- It is best practice to create a program/plan that includes details like student eligibility requirements, staffing/instruction, curriculum, designate number of credits earned, where/how testing will occur, reporting, how tests will be paid for, etc.
- School Board must approve the program/plan before utilizing.
- **Student is still enrolled in school, needs to be served by the school, and working towards a high school diploma.**
- **Student is not in Adult Education, attending an Adult Learning Center, nor working towards a GED.**
- All other credits and requirements for graduation are still mandatory (i.e. Physical Education and Civics Test). DPI has created course codes that can be used.

Actual GED Testing

- Most physical GED testing centers are located in out Adult Learning Centers (ALCs) across the state. These can be used, scheduling usually occurs through GED.com student account and sometimes, contacting the ALC.
- GED is an assessment that can be taken online, in a virtually proctored and secure testing environment (Pearson-OnVue). This allows a student to test from home or at school.
- Both of the above will require a one-time approval from DPI. It is requested through the GED.com account and the process is simple.
- A school or district can also explore becoming an Official GED Testing Center if the two options above do not suffice.

ALC Involvement

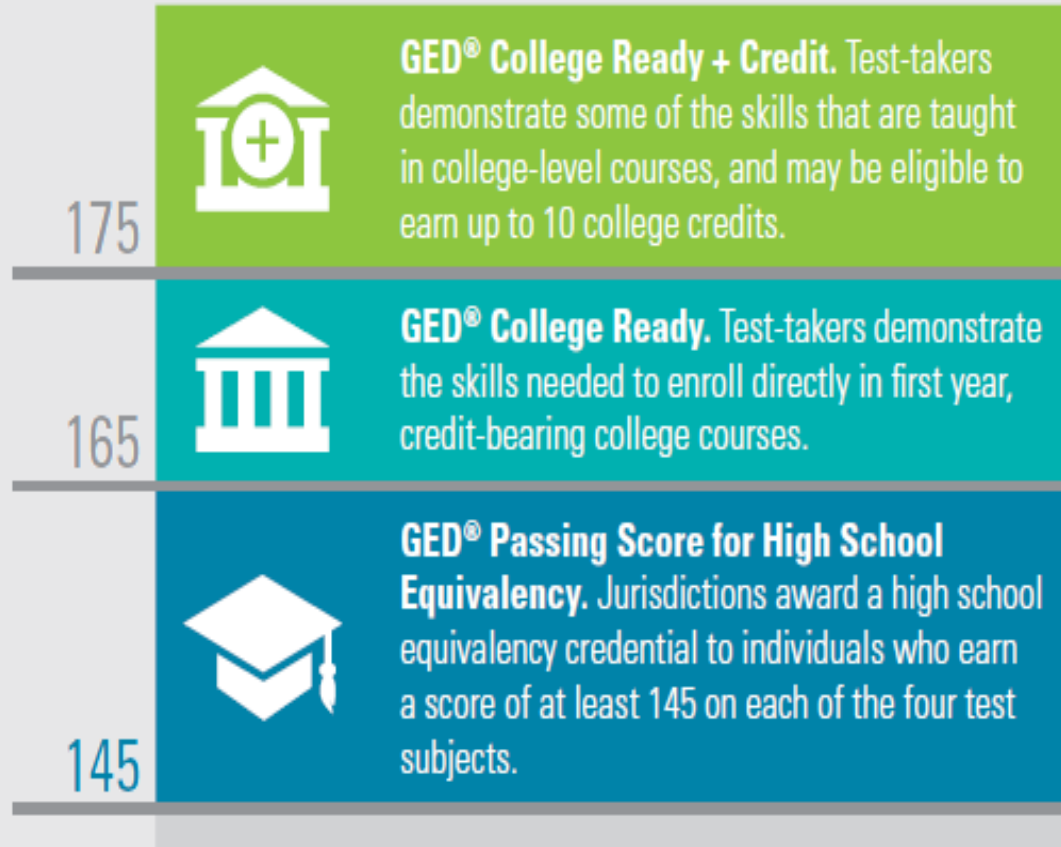
- ALCs across the state are willing to assist with tried and tested instructional strategies, curriculums, and best practice with GED prep, testing processes, GED practice test set up and use, program development, etc. If needing help finding a contact number for an ALC in ND, please reach out to me.
- If Option 2 does not work and neither is any other strategy, please refer the student to the nearest ALC. If a student did complete some tests while utilizing Option 2, those test scores do carry over to trying to earn a GED.

Thank You!

- If needing any kind of assistance with Option 2 please feel free to reach out.
- I have created a 1.5 page guidance document with hyperlinks to assist – can email to anyone interested.
- Contact info:
 - Stanley Schauer Jr.
 - seschauer@nd.gov
 - 701-328-2224

Interpreting scores

GED® test scores for each test subject range from 100 to 200. Test-takers must earn a minimum score of 145 on each test subject to pass and earn the high school equivalency credential. The GED® test has two additional passing levels: GED® College Ready (165-174) and GED® College Ready + Credit (175-200).



GED® Test Average Score and Estimated National (U.S.) Class Rank of Graduating High School Seniors

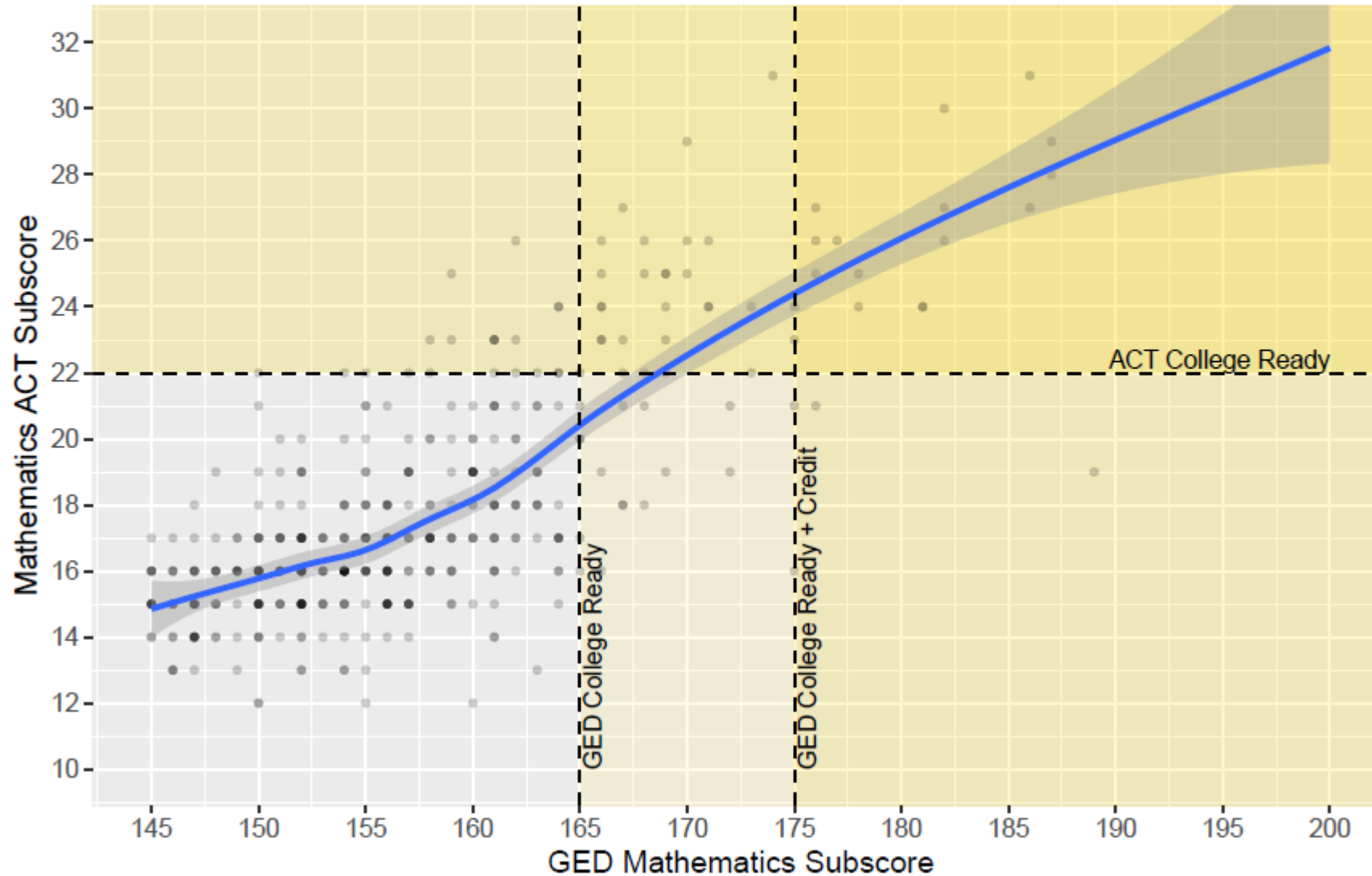
| GED® Test Average Score | Estimated National Class Rank |
|---|-------------------------------|
| 187-200 | Top 1% |
| 183-186 | Top 2% |
| 182 | Top 3% |
| 179-181 | Top 4% |
| 178 | Top 5% |
| 177 | Top 6% |
| 176 | Top 7% |
|  175 | Top 8% |
| 174 | Top 9% |
| 173 | Top 10% |
| 172 | Top 11% |
| 171 | Top 13% |
| 170 | Top 16% |
| 169 | Top 19% |
| 168 | Top 20% |
| 167 | Top 22% |
| 166 | Top 23% |
|  165 | Top 27% |
| 164 | Top 31% |
| 163 | Top 34% |
| 162 | Top 37% |

| GED Content Area | GED Performance Level | ACT Score - English | | | | ACT Score - Math | | | | ACT Score - Optional ACT Science | | | | ACT Score - Optional ACT Reading | | | |
|------------------|-----------------------|---------------------|-----|-------|-----------|------------------|-----|-------|-----------|----------------------------------|-----|-------|-----------|----------------------------------|-----|-------|-----------|
| | | Min | Max | Mean | Std. Dev. | Min | Max | Mean | Std. Dev. | Min | Max | Mean | Std. Dev. | Min | Max | Mean | Std. Dev. |
| RLA | All Levels | 4 | 36 | 21.85 | 6.74 | 5 | 36 | 22.27 | 6.02 | 5 | 36 | 22.93 | 5.77 | 5 | 36 | 23.16 | 6.84 |
| | 100-144 | 4 | 30 | 13.59 | 3.77 | 5 | 31 | 16.80 | 5.11 | 5 | 32 | 17.19 | 3.25 | 5 | 32 | 14.65 | 4.35 |
| | 145-164 | 8 | 35 | 20.39 | 4.67 | 6 | 36 | 20.65 | 4.73 | 5 | 36 | 21.25 | 4.51 | 5 | 36 | 22.17 | 5.05 |
| | 165 - 174 | 13 | 36 | 25.93 | 5.29 | 12 | 36 | 25.44 | 4.78 | 14 | 36 | 26.25 | 4.66 | 8 | 36 | 26.19 | 5.89 |
| | 175 - 200 | 17 | 36 | 30.17 | 5.58 | 15 | 36 | 29.76 | 4.16 | 15 | 36 | 29.28 | 5.17 | 17 | 36 | 31.15 | 4.71 |
| Math | All Levels | 2 | 36 | 21.64 | 6.84 | 2 | 36 | 22.35 | 5.98 | 5 | 36 | 22.85 | 5.84 | 5 | 36 | 23.07 | 6.81 |
| | 100-144 | 2 | 29 | 14.10 | 4.05 | 2 | 28 | 16.86 | 4.59 | 5 | 27 | 16.21 | 3.77 | 5 | 32 | 14.90 | 4.37 |
| | 145-164 | 4 | 36 | 20.56 | 4.70 | 5 | 33 | 21.06 | 4.12 | 5 | 36 | 21.62 | 4.22 | 5 | 36 | 22.21 | 5.01 |
| | 165 - 174 | 8 | 36 | 24.67 | 6.24 | 8 | 36 | 24.83 | 5.26 | 8 | 36 | 25.74 | 4.69 | 7 | 36 | 26.03 | 6.25 |
| | 175 - 200 | 17 | 36 | 30.67 | 4.72 | 15 | 36 | 30.44 | 4.55 | 15 | 36 | 30.05 | 4.24 | 17 | 36 | 30.49 | 4.93 |
| Science | All Levels | 4 | 36 | 21.82 | 6.76 | 5 | 36 | 22.39 | 5.98 | 5 | 36 | 22.98 | 5.92 | 5 | 36 | 23.05 | 6.88 |
| | 100-144 | 5 | 23 | 15.24 | 3.35 | 6 | 25 | 16.63 | 4.39 | 5 | 27 | 16.92 | 3.74 | 5 | 24 | 17.55 | 4.82 |
| | 145-164 | 4 | 35 | 19.69 | 5.11 | 5 | 34 | 20.68 | 4.68 | 5 | 36 | 21.26 | 4.36 | 5 | 36 | 20.79 | 5.58 |
| | 165 - 174 | 8 | 36 | 26.35 | 5.63 | 8 | 36 | 25.84 | 4.68 | 8 | 36 | 26.62 | 5.17 | 7 | 36 | 27.19 | 5.40 |
| | 175 - 200 | 15 | 36 | 31.73 | 3.89 | 15 | 36 | 31.02 | 3.65 | 15 | 36 | 31.25 | 3.99 | 17 | 36 | 32.41 | 3.70 |
| Social Studies | All Levels | 4 | 36 | 21.50 | 7.21 | 5 | 36 | 21.85 | 6.48 | 5 | 36 | 22.98 | 5.84 | 5 | 36 | 23.33 | 6.75 |
| | 100-144 | 5 | 26 | 14.84 | 3.36 | 7 | 28 | 15.69 | 4.32 | 13 | 25 | 17.76 | 2.47 | 12 | 29 | 15.13 | 2.63 |
| | 145-164 | 4 | 35 | 18.54 | 5.82 | 5 | 35 | 19.50 | 5.20 | 5 | 36 | 20.62 | 4.93 | 5 | 36 | 21.15 | 5.01 |
| | 165 - 174 | 19 | 36 | 26.66 | 4.19 | 19 | 36 | 25.55 | 4.08 | 17 | 36 | 25.75 | 3.95 | 18 | 36 | 27.32 | 4.80 |
| | 175 - 200 | 17 | 36 | 28.67 | 5.59 | 15 | 36 | 28.41 | 5.18 | 15 | 36 | 28.95 | 4.32 | 17 | 36 | 29.37 | 6.05 |

Data Source: 2013 GED Standardization and Norming Study

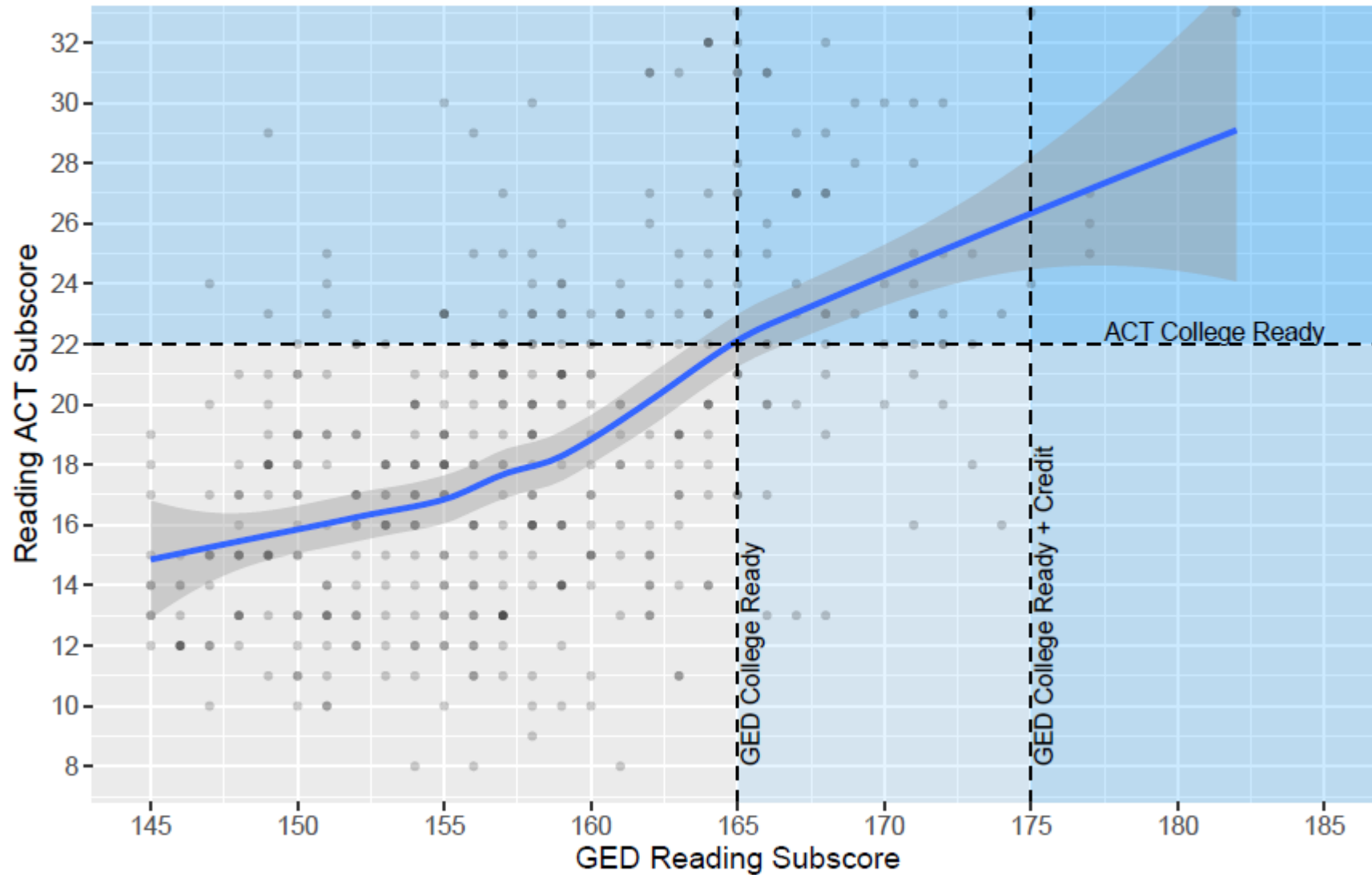
Math ACT vs. GED Math Subscore

All students were included who had taken the ACT test in addition to their GED results. The total sample size was 418 students.



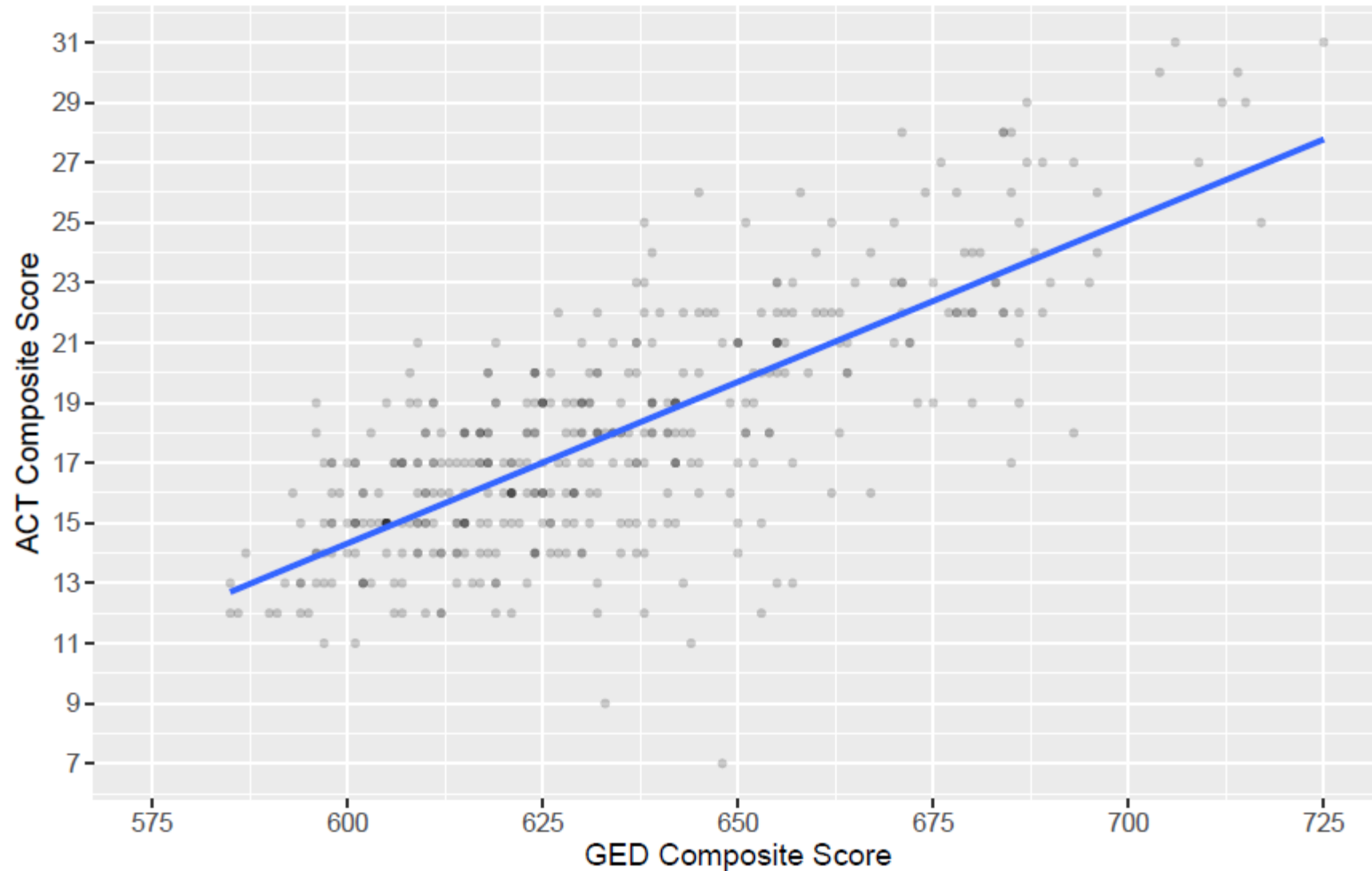
Reading ACT vs. GED Reading Subscore

All students were included who had taken the ACT test in addition to their GED results. The total sample size was 417 students.



GED Composite vs. ACT Composite

All students were included who had taken the ACT test in addition to their GED results. The total sample size was 417 students.



There is a strong linear correlation (0.752) between GED Composite scores and ACT Composite scores for those students that took both tests.